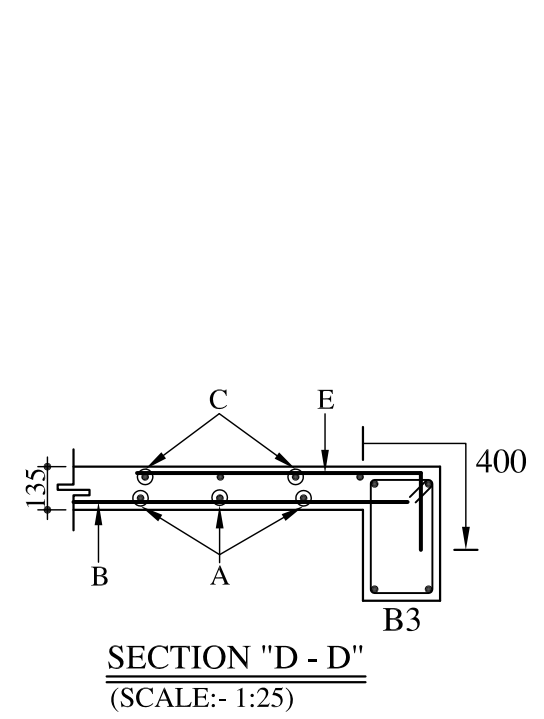
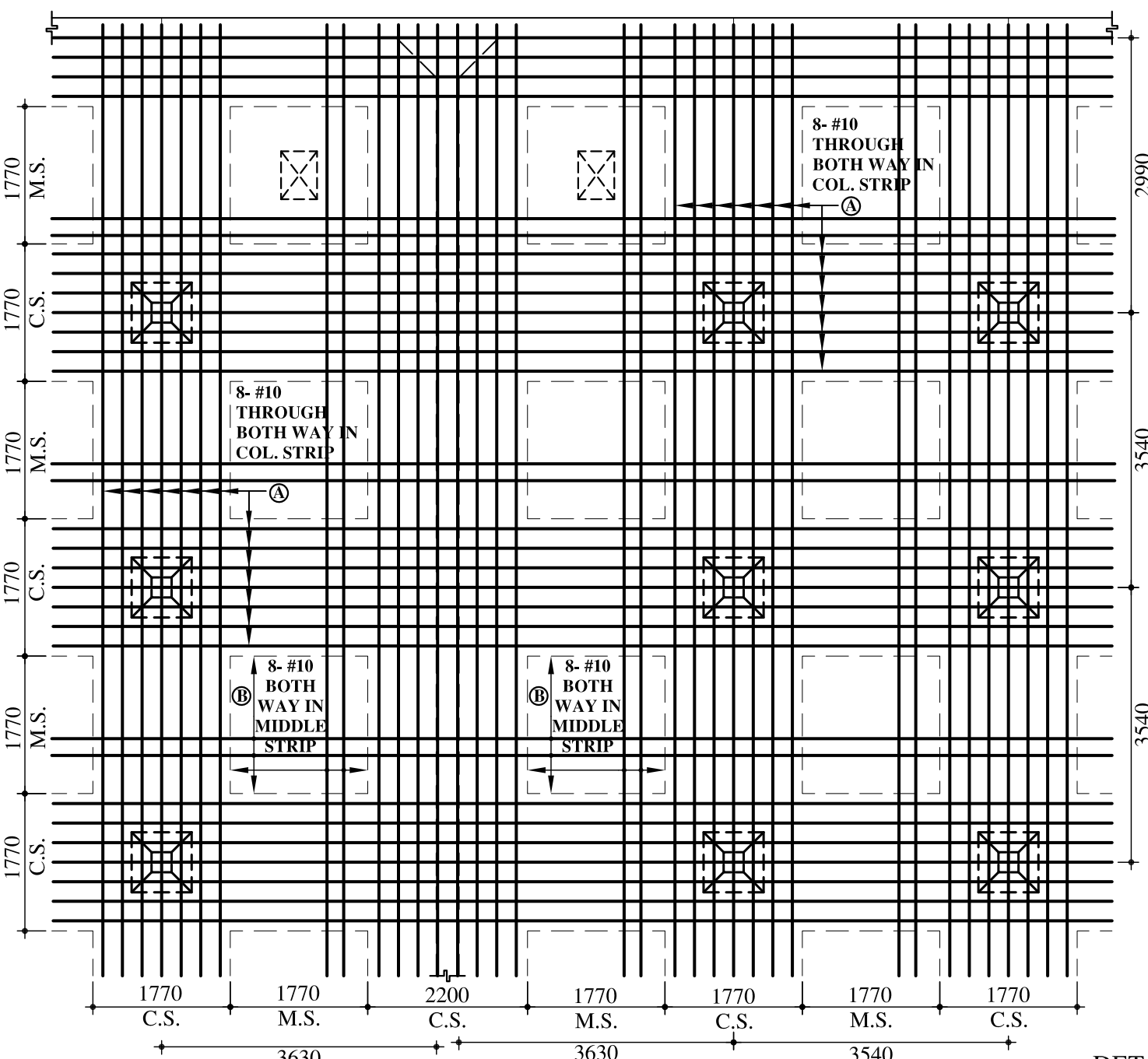


FRAMING PLAN AT TOP SLAB LEVEL FOR GSR THICKNESS = 135
(SCALE:- 1:200)

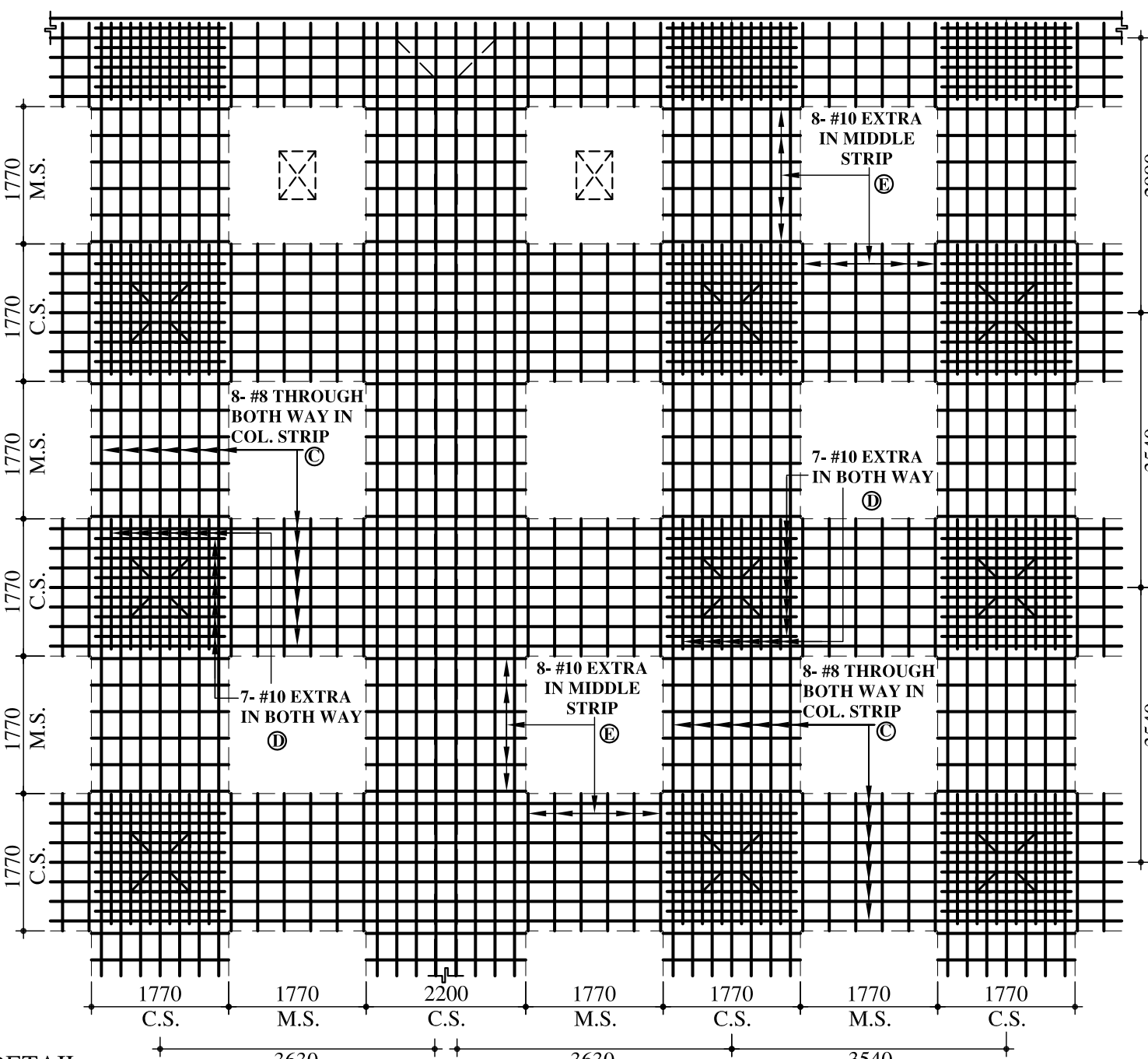
LEGEND:- M. S. - MIDDLE STRIP
C. S. - COLUMN STRIP

- NOTES:-**
1. ALL DIMENSIONS ARE IN mm AND LEVELS IN m
 2. REFER NOTES ON DRG. NO. 770.GSR.2A
 3. BEAM DEPTH IS INCLUSIVE OF SLAB THICKNESS.
 4. BEAM BOTTOM AND TOP STRAIGHT BARS ARE TO BE ANCHORED IN TO SUPPORT FOR Ld.
 5. BEAM BOTTOM CUT BARS IN CENTRE ARE TO BE CURTAILED AT L/10 FROM FACE OF SUPPORT.
 6. BEAM BOTTOM AND TOP CUT BARS AT ENDS ARE TO BE EXTENDED FOR Ld OR L/4, WHICHEVER IS MORE, FROM FACE OF SUPPORT TOWARDS CENTRE AND ARE TO BE ANCHORED IN TO SUPPORT FOR Ld.
 7. DIMENSIONS ARE TO BE READ AND NOT MEASURED.
 8. REFER DRG. NO. 770.GSR.3B ALONG WITH THIS DRAWING
- LEGEND:-** Ld = DEVELOPMENT LENGTH OF THE BAR
= 40 x DIA. OF BAR.
L = CLEAR SPAN OF THE BEAM.

REV. NO.	REV. DATE	REVISION DETAILS	APPD. BY



DETAIL "Y" - SLAB REINFORCEMENT DETAIL
(SCALE:- 1:75)



PRINCIPAL CLIENT :-

ARCHITECT:-

PROJECT TITLE:-

DRG. NO.

DRAWING TITLE:-
R. C. DETAILS FOR GSR TOP
SLAB - FRAMING PLAN (REV-1)

LAKHLANI ASSOCIATES
CIVIL AND STRUCTURAL ENGINEERS

SHREE SOCIETY MAIN ROAD
Nr. SURYAMUKHI HANUMAN TEMPLE
NANA MAVA MAIN ROAD
NEXT TO VIVEKANAND SCHOOL
RAJKOT - 360 001
PHONE : +91 281 247 51 60
E-mail : contact@lakhilani.com
Web : www.lakhilani.com